

1. PIT DIMENSIONS ARE TYP. 21" INSIDE DIA. AND 36" TALL
2. CASTING SHALL BE OF RECESSED KIND TO ACCOMMODATE ANTENNA
3. ANGLE VALVE SHALL BE QUARTER-TURN BALL VALVE TYPE

NOTES:

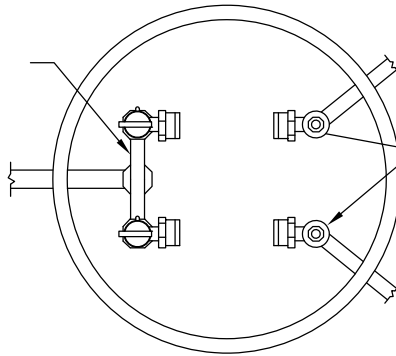
1. IF SERVICE LINE IS PLASTIC (HDPE SIDR 7 OR APPROVED EQUAL), TRACER WIRE IS REQUIRED BETWEEN THE METER PIT AND THE WATER MAIN, AND IS STRONGLY ENCOURAGED FROM THE METER PIT TO THE STRUCTURE. TRACER WIRE (#12 AWG COPPER CLAD STEEL-BLUE) SHALL BE SECURELY TAPED OR PLASTIC TIED TO THE SERVICE. THE TAPED/PLASTIC TIED CONNECTIONS SHALL NOT EXCEED A SPACING INTERVAL OF 5.0 FEET. TRACER WIRE SHALL BE GROUNDED USING A BRASS/BRONZE GROUND CLAMP.
2. LOCATION OF PIT IS TO BE AT R/W (P/L). PLACEMENT IN THE AREA BETWEEN THE SIDEWALK AND BACK OF CURB SHALL ONLY TAKE PLACE WITH PRIOR APPROVAL OF THE CITY.
3. CONTRACTOR SHALL CONTACT THE UTILITY DEPARTMENT FOR THE CITY OF BELLEFONTAINE PRIOR TO TAPPING THE WATER SOURCE OR USING ANY TREATED WATER. AFTER THE CITY OF BELLEFONTAINE HAS ISSUED A PERMIT, THE CONTRACTOR SHALL PURCHASE AND INSTALL ALL COMPONENTS SHOWN ON THE DRAWING TO ENSURE A FULLY FUNCTIONAL UNIT.
4. ONCE ALL COMPONENTS ARE INSTALLED, CONTRACTOR SHALL CONTACT THE CITY TO INSTALL METER & ANTENNA.
5. ALL FITTINGS TO BE BRASS.

DUAL WATER METER
TYPE 3/4" AND 1"
STANDARD DRAWING (1 OF 2)
WA 2.0

APPROVED BY: J. BISCHOFF
APPROVED DATE: 2/7/2024
REVISIONS: 0.0



3/4" OR 1" ANGLE BALL
VALVE BY FORD
METER BOX COMPANY
MODEL
UV43-42W-65-NL
STYLE OR APPROVED
EQUAL



3/4" OR 1" SINGLE CHECK
VALVE BY FORD METER BOX
COMPANY MODEL
HA34-xxx-Q-NL STYLE OR
APPROVED EQUAL

SECTION A-A

DUAL WATER METER
TYPE 3/4" AND 1"
STANDARD DRAWING (2 OF 2)
WA 2.1

APPROVED BY: J. BISCHOFF

APPROVED DATE: 2/7/2024

REVISIONS: 0.0

